



WHY IS 1923 IMPORTANT FOR TÜRKİYE?

K. Atatürk



LOCATION

**TURKEY WITH ITS NEWLY CHANGED NAME
TÜRKİYE, IS THE COUNTRY THAT IS LOCATED ON
THE CONTINENTS ASIA AND EUROPE.**



GEOGRAPHY

TÜRKİYE IS SUBDIVIDED INTO 7 REGIONS. AND IT HAS 81 PROVINCES. MOST POPULATED ONES ARE İSTANBUL, ANKARA, İZMİR AND ANTALYA.



HISTORY

**TÜRKİYE IS A DEMOCRATIC
AND SECULAR COUNTRY.**

**IN MANY COUNTRIES, THERE
HAVE BEEN RADICAL CHANGES AT
SOME POINT IN HISTORY.**

**THE MOST RADICAL CHANGES
TOOK PLACE DURING THE REPUBLIC
PERIOD IN TÜRKİYE .**



K. Atatürk



**ATATÜRK STRENGTHENED
OUR COUNTRY AGAINST THE
CHANGING CONDITIONS OF
THE WORLD.**

**THE FREEDOM OF THOUGHT,
WOMEN'S RIGHTS AND THE
RIGHT OF CITIZENS TO SELF-
GOVERNANCE WERE
ENSURED.**

M. KEMAL ATATÜRK DID MANY RADICAL CHANGES TO MODERNISE AND DEVELOP THE COUNTRY.



HE WAS THE MOST REFORMIST AND INNOVATIVE LEADER IN TURKISH HISTORY



TURKISH GRAND NATIONAL ASSEMBLY





FASHION IN 1923s

**ANATOLIAN GEOGRAPHY
HAS HOSTED MANY
CIVILIZATIONS
THROUGHOUT HISTORY.**

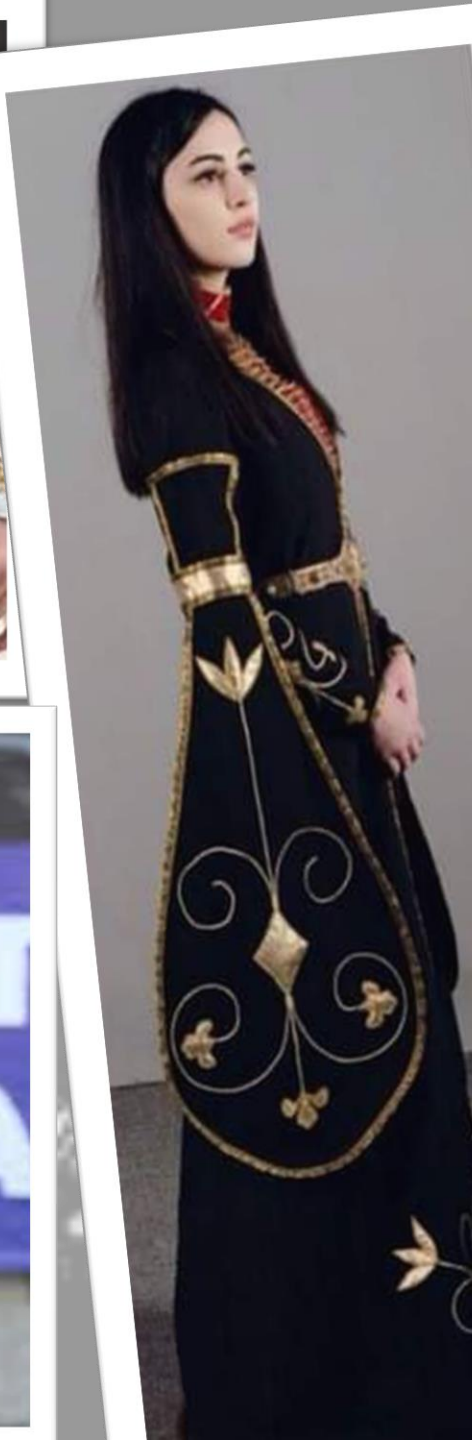


IT IS POSSIBLE TO SEE THE
INFLUENCES OF THESE
CULTURES IN THE SENSE
OF FASHION.









**WITH THE REPUBLIC, THE
UNDERSTANDING OF FASHION
CHANGED.**

















**THANK YOU
FOR YOUR
ATTENTION!**

B. Atkinson